

Name: _____

Date: _____



FRACTIONS-HALVES & QUARTERS

What fraction of the apples are green?



- ☐ half
- ☐ quarter

What fraction of the socks are red?



- ☐ half
- ☐ quarter

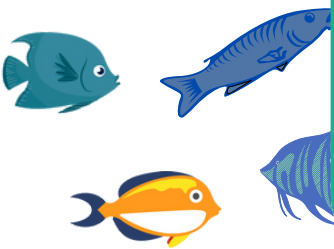
What fraction of the shoes are not red?



What fraction of the shape

- ☐ half
- ☐ quarter

What fraction of the fish are not blue?



What fraction of the fruits are correct?



- ☐ yes
- ☐ no

PREVIEW

Gain unlimited access to a large collection of interactive digital and print Maths resources

If you are a member, please login to download this worksheet

If you are NOT a member, please sign up to gain complete access



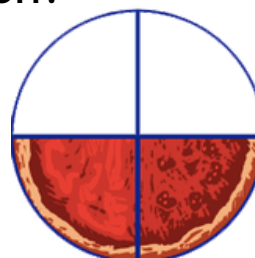
www.skoolmaths.com

John said the shape shown is a quarter. Is he correct?



- ☐ yes
- ☐ no

What fraction of the pie is eaten?

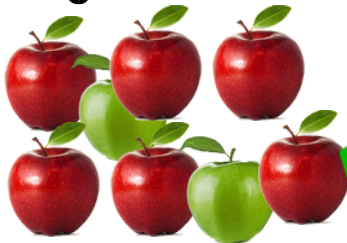


- ☐ half
- ☐ quarter



ANSWERS

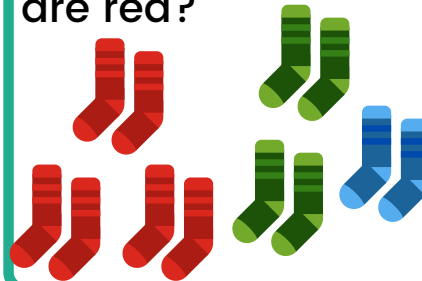
What fraction of the apples are green?



☐ half

☒ quarter

What fraction of the socks are red?



☐ half

☐ quarter

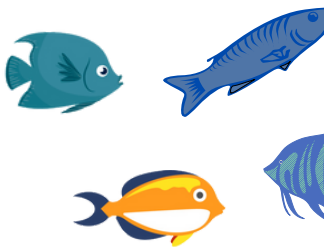
What fraction of the shoes are not red?



☐ half

☒ quarter

What fraction of the fish are not blue?



What fraction of the shape is not red?

☐ half

☒ quarter

What fraction of the fruits are correct?



☐ yes



☒ no

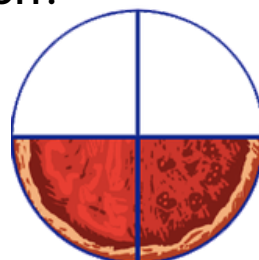
John said the shape shown is a quarter. Is he correct?



☒ yes

☐ no

What fraction of the pie is eaten?



☒ half

☐ quarter